



**CHANTLAND**  
M H S

*Since  
1943*

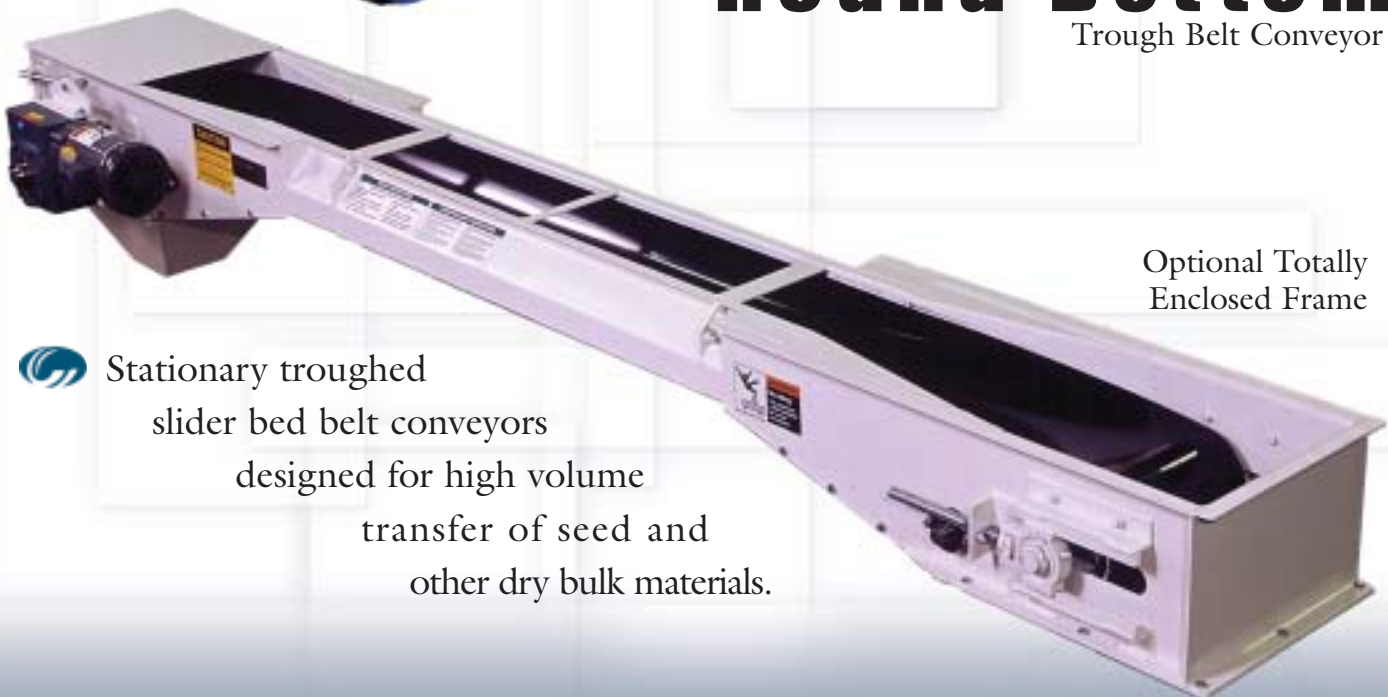
Material Handling Solutions



Standard Open Frame

## Round Bottom

Trough Belt Conveyor



Optional Totally Enclosed Frame



Stationary troughed  
slider bed belt conveyors  
designed for high volume  
transfer of seed and  
other dry bulk materials.

# SOLUTIONS

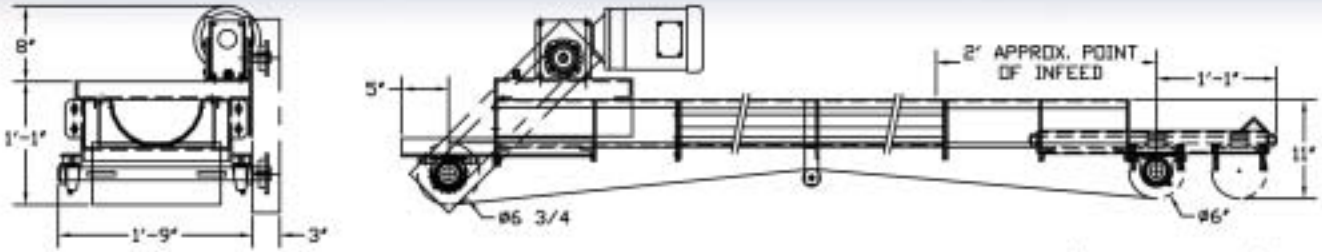
[www.chantland.com](http://www.chantland.com)

BAG FILLERS • CONVEYORS • PALLETIZERS • SYSTEMS

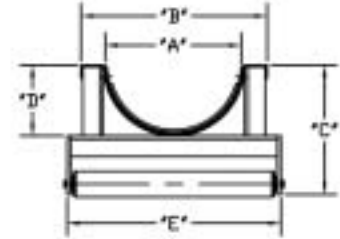
# CH ROUND BOTTOM

Trough Belt Conveyor

Since 1943



NOTE: DRAWING BASED ON 12" WIDE BELT  
(STANDARD FRAME SHOWN)



TYPICAL CROSS SECTION

STANDARD FRAME

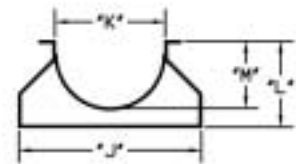
## DESIGN FEATURES:

- Radius trough provides maximum capacity.
- Frame design offers structural integrity and reliable service.
- Crowned terminal pulleys for positive belt tracking.
- Protected screw take-ups for trouble free belt tensioning.
- Drives engineered per application.
- Lengths and widths to meet project requirements.

BELT WIDTH	"A"	"B"	"C"	"D"	"E"	"J"	"K"	"L"	"M"
12"	10"	13-1/2"	9-3/8"	5-1/8"	15-1/2"	13-1/4"	8"	6-1/4"	4-7/8"
16"	14"	17-1/2"	11-3/8"	7-1/8"	19-1/2"	17-3/4"	14"	8-3/8"	7"
18"	N/A	N/A	N/A	N/A	N/A	19-3/4"	15"	9"	7-5/8"
20"	16"	19-1/2"	12-3/8"	8-1/8"	21-1/2"	21-3/4"	16"	9-3/8"	8"
24"	N/A	N/A	N/A	N/A	N/A	26"	20"	11-5/8"	10-1/8"
26"	20"	23-1/2"	14-3/8"	10-1/8"	27-1/2"	N/A	N/A	N/A	N/A

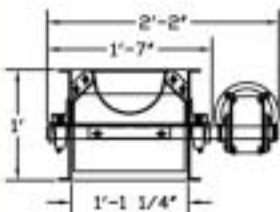
## AVAILABLE FEATURES:

- Fully enclosed design to reduce product and environmental contamination.
- Anti static black UHMW bed liners for handling abrasive products.
- Removable top weather cover to minimize exposure to outdoor elements.
- Removable return covers to prevent incidental personnel contact.
- Removable tail pulley cover to prevent incidental personnel contact.
- Receiving hoppers, discharge spouts and inlet skirts.



TYPICAL CROSS SECTION

ENCLOSED FRAME



NOTE: DRAWING BASED ON 12" WIDE BELT  
(ENCLOSED FRAME SHOWN)

Designs and specifications subject to change without notice

Designed and printed in the U.S.A.

P.O. BOX 279 • HUMBOLDT, IA 50548 • PHONE: 515.332.4045 • FAX: 515.332.1502